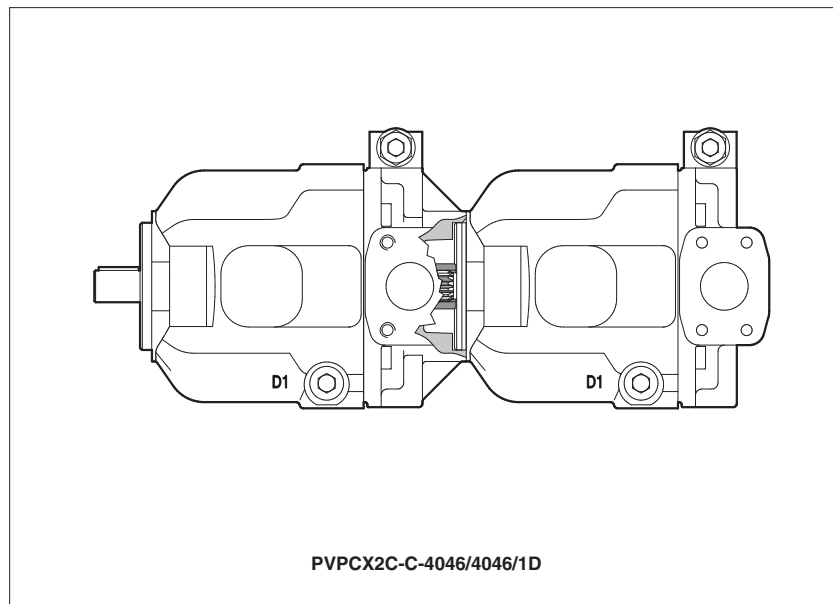


# Multiple axis piston pumps type PVPCX2C

variable displacement

**Available only on request**



PVPCX2C are combined groups made by two variable displacement axial piston pumps type PVPC coupled together by means of a special intermediate flange and joint.

The pumps are available with standard max displacement 29, 46, 71 and 88 cc/rev and with standard mechanical controls (see KT catalog, tab. A160)

Other executions with proportional controls are available on request.

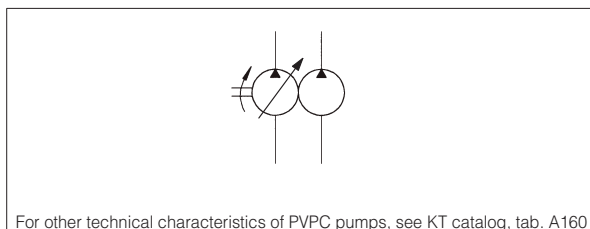
## 1 MODEL CODE

<b>080***</b>	<b>PVPCX2C</b>	<b>-</b>	<b>CH</b>	<b>-</b>	<b>4</b>	<b>046</b>	<b>/</b>	<b>3</b>	<b>029</b>	<b>/</b>	<b>1</b>	<b>D</b>	<b>-I</b>	<b>X</b>	<b>24DC</b>	<b>*</b>	<b>/*</b>	
Special code																		Seals material: - = NBR <b>PE</b> = FKM
Axial piston pumps multiple execution																		
Type of control first / second pump (1): <b>C</b> = manual pressure compensator <b>CH</b> = manual pressure compensator, with venting <b>R</b> = remote pressure compensator <b>L</b> = load sensing (pressure & flow) <b>LW</b> = constant power (combined pressure & flow)																		
Size of first pump see section 2: <b>3</b> = for displacement 029 <b>4</b> = for displacement 046 <b>5</b> = for displacement 073 and 090																		
Max displacement of first pump see section 2: <b>029</b> = 29 cm <sup>3</sup> /rev <b>046</b> = 46 cm <sup>3</sup> /rev <b>073</b> = 73 cm <sup>3</sup> /rev <b>090</b> = 88 cm <sup>3</sup> /rev																		
Size of second pump see section 2: <b>3</b> = for displacement 029 <b>4</b> = for displacement 046 <b>5</b> = for displacement 073 and 090																		
Max displacement of second pump see section 2: <b>029</b> = 29 cm <sup>3</sup> /rev <b>046</b> = 46 cm <sup>3</sup> /rev <b>073</b> = 73 cm <sup>3</sup> /rev <b>090</b> = 88 cm <sup>3</sup> /rev																		
<b>(1) proportional controls available on request, consult our technical office</b>																		
Direction of rotation (viewed at the shaft end) <b>D</b> = clockwise <b>S</b> = counterclockwise																		
Solenoid of pilot valve (only for control type CH): <b>-I</b> = solenoid OI (DHI) for AC and DC supply																		
<b>X</b> = without connector (only for control type CH)																		
Supply voltage (only for control type CH): see KT catalog, tab. A160, section 5:																		
Series number																		
Shaft (SAE Standard): <b>1</b> = keyed (7/8" for 029 - 1" for 046 - 1 1/4" for 073 and 090) <b>5</b> = splined (13 teeth for 029 - 15 for 046 - 14 for 073 and 090)																		

## 2 PUMPS SIZE AND DISPLACEMENT

size code	displacement code	max displacement [cm <sup>3</sup> /rev]
3	029	29
4	046	46
5	073	73
	090	88

## 3 HYDRAULIC SYMBOL



**4 PUMPS COMBINATIONS AND SHAFT TORQUE**

Multiple pump	First pump	1 <sup>st</sup> shaft max torque [Nm]		Second pump	2 <sup>nd</sup> shaft max torque [Nm]
		type 1	type 5		
080*** PVPCX2C-*/*-3029/3029	PVPCXB-*.3029/*	200	190	PVPC-X-3029/5*	135
080*** PVPCX2C-*/*-4046/3029	PVPCXB-*.4046/*	230	330	PVPC-X-3029/5*	250
080*** PVPCX2C-*/*-4046/4046	PVPCXB-*.4046/*	230	330	PVPC-X-4046/5*	250
080*** PVPCX2C-*/*-5073/3029	PVPCXB-*.5073/*	490	620	PVPC-X-3029/5*	330
080*** PVPCX2C-*/*-5073/4046	PVPCXB-*.5073/*	490	620	PVPC-X-4046/5*	330
080*** PVPCX2C-*/*-5073/5073	PVPCXC-*.5073/*	490	620	PVPC-X-5073/5*	440
080*** PVPCX2C-*/*-5090/3029	PVPCXB-*.5090/*	490	620	PVPC-X-3029/5*	330
080*** PVPCX2C-*/*-5090/4046	PVPCXB-*.5090/*	490	620	PVPC-X-4046/5*	330
080*** PVPCX2C-*/*-5090/5073	PVPCXC-*.5090/*	490	620	PVPC-X-5073/5*	440
080*** PVPCX2C-*/*-5090/5090	PVPCXC-*.5090/*	490	620	PVPC-X-5090/5*	440

**5 DIMENSIONS [mm]**

**080\*\*\* PVPCX2C-C/C-3029/3029**

IN 2217 182.7 39 IN  
 2312 2217  
 PVPC-C-3029 PVPC-C-3029

**080\*\*\* PVPCX2C-C/C-4046/3029**

IN 227.7 182.7 45 IN  
 260.5 221.7  
 PVPC-C-4046 PVPC-C-3029

**080\*\*\* PVPCX2C-C/C-4046/4046**

IN 251 206 45 IN  
 260.5 251  
 PVPC-C-4046 PVPC-C-4046

**080\*\*\* PVPCX2C-C/C-5073/3029**

IN 238.4 182.7 55.7 IN  
 303.6 221.7  
 PVPC-C-5073  
 PVPC-C-5090

**080\*\*\* PVPCX2C-C/C-5073/4046**

IN 261.7 206 55.7 IN  
 303.6 251  
 PVPC-C-5073  
 PVPC-C-5090

**080\*\*\* PVPCX2C-C/C-5073/5073**

IN 290.9 235.2 55.7 IN  
 303.6 290.9  
 PVPC-C-5073  
 PVPC-C-5090

**Note:**  
 The above dimensions are referred to the basic pumps with control type C.  
 For other type of controls (CH, R, L, LW) the reported dimensions remains uncharged