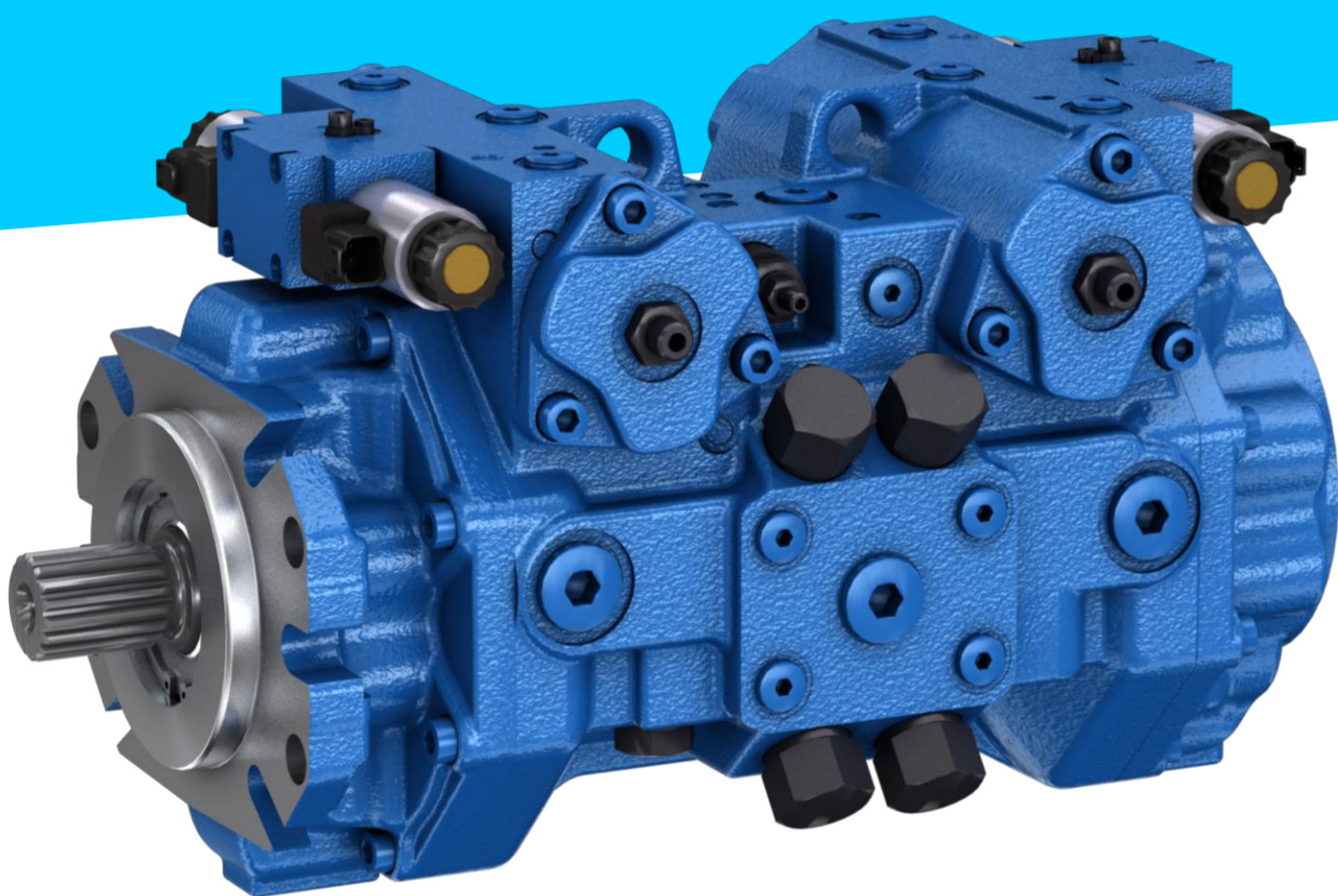


# Axial piston variable double pump A24VG series 10

Short installation length and highest pressure level

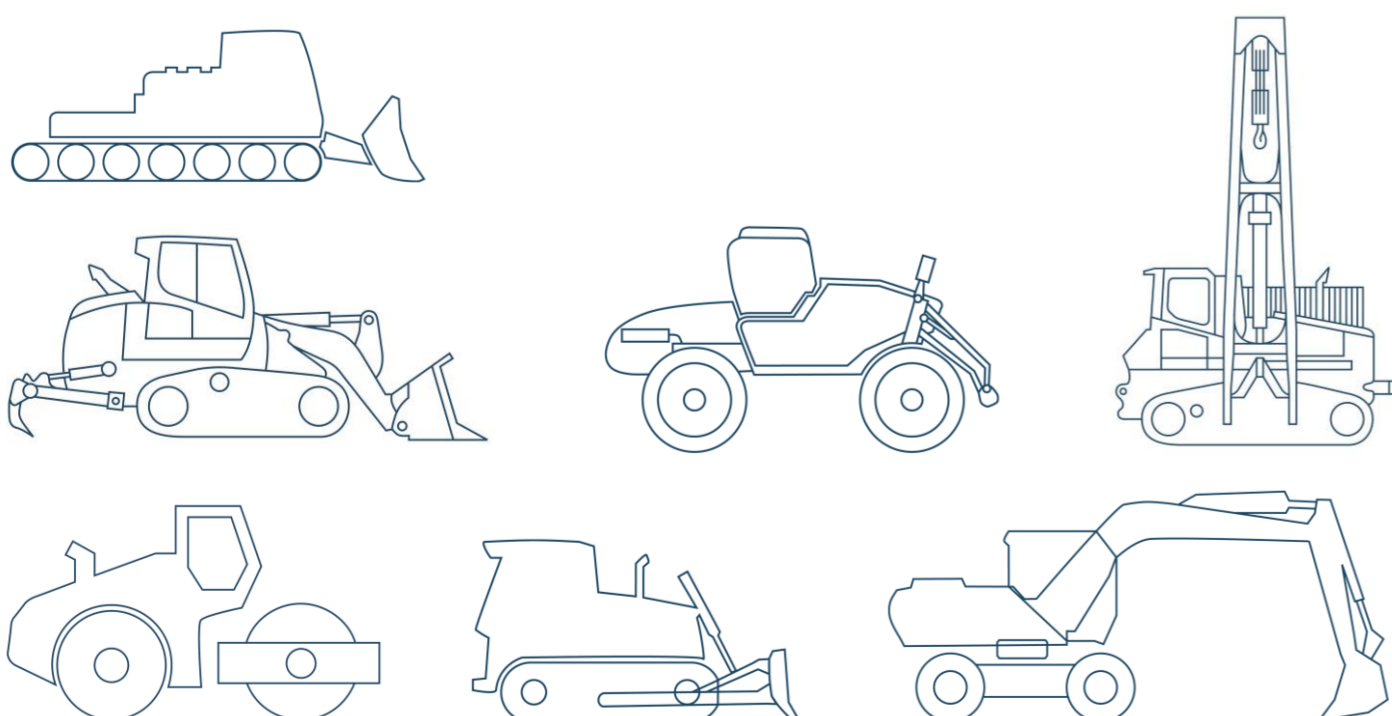


Modern combustion engines equipped with exhaust gas after-treatment systems have become standard in mobile working machines. As a consequence, there is less space available for the installation of the hydraulics in mobile working machines than in earlier vehicle generations. Bosch Rexroth offers with the axial piston variable double pump A24VG series 10 a suitable solution for the use in dozers and rollers with a dual-circuit travel drive. Further potential applications are crawler loaders, snow groomers, pipe layers, wheeled excavators and field sprayers.

## CUSTOMER BENEFITS

- Expansion of the product portfolio
- Variable double pump with highest pressure level
- Very short double pump for limited installation space
- High variability and various options
- Solid flange to stabilize further pumps
- Easy to assemble positioning of the working ports
- Variable double pump in proven swashplate design

## APPLICATIONS



## FUNCTION AND BENEFITS

### Expansion of the product portfolio

Bosch Rexroth has expanded the product range of the already well-established Rexroth axial piston variable double pump A24VG series 10 in swashplate design with the three sizes 85 cm<sup>3</sup>, 110 cm<sup>3</sup> and 125 cm<sup>3</sup>. Thus, the product range comprises five sizes from 45 cm<sup>3</sup> to 125 cm<sup>3</sup> which are realized in two housing sizes. Depending on the application, the rotary groups can be combined to different sizes of the variable double pump in back-to-back design. This enables the adaption of the Rexroth A24VG to individual customer requirements. Through the expansion of the product portfolio, Bosch Rexroth meets the requirements of mobile working machines of smaller and higher power classes.

### Variable double pump with highest pressure level

The Rexroth A24VG consists of proven and reliable rotary groups and is designed for a nominal pressure of 450 bar and a maximum pressure of 500 bar. For this reason, the pump is also suitable for use in track vehicles with highest pressure demands (e.g. as travel drive in dozers). At the moment, the Rexroth A24VG is the only axial piston variable double pump in back-to-back design with a pressure level of up to 500 bar which is available in the market.

## Axial piston variable double pump A24VG series 10

Short installation length and highest pressure level

## TECHNICAL DATA

### Axial piston variable double pump A24VG series 10

Sizes:	2 x 45 cm <sup>3</sup> to 2 x 125 cm <sup>3</sup>
Nominal pressure:	450 bar
Maximum pressure:	500 bar
Flanges:	SAE-C, SAE-D, SAE-E
Drive shafts:	1 3/8 in, 1 1/2 in, 1 3/4 in, 2 in
Working ports:	Flange ports A/B according to SAE <ul style="list-style-type: none"><li>▪ sizes 45 - 65: 3/4 in</li><li>▪ sizes 85 - 125: 1 1/4 in</li></ul>
Control devices:	<ul style="list-style-type: none"><li>▪ EP-Proportional control electric</li><li>▪ ET-electric control, direct controlled</li><li>▪ HT-Hydraulic control, direct controlled</li><li>▪ HW-Proportional control hydraulic, mechanical servo</li><li>▪ HP-Proportional control hydraulic, pilot-pressure related</li><li>▪ EZ-Two-point control electric</li></ul>
Options:	Through drive, swivel angle sensor, speed sensor, pressure cut-off (on request), integrated sequence valves (brake release, control pressure)
Installation lengths:	405 mm to 560 mm (w/o through drive)
Data sheet:	93240



The Rexroth A24VG with a maximum pressure of 500 bar is also suitable for applications with highest pressure demands.

### Very short double pump for limited installation space

The Rexroth axial piston variable double pump A24VG in back-to-back design is not only characterized by a high pressure level but also provides a very short installation length. This is achieved through a compact and universal design of the housing and various possible combinations of the flanges. The installation length of the Rexroth A24VG with rotary groups of 2 x 45 cm<sup>3</sup> displacement and SAE-C flange is only 405 mm.

The combinations of the rotary groups of 2 x 110 cm<sup>3</sup> and 2 x 125 cm<sup>3</sup> have an installation length of only 560 mm in each case. Thus, the Rexroth axial piston variable double pump A24VG is considerably shorter in a lot of versions than similar products in the market.

### High variability and various options

A further benefit of the Rexroth A24VG series 10 is its high flexibility. If required, it is possible to rotate the housing by 180 degrees. Therefore, all working ports are located either on the left or right side of the housing. Manifold control devices allow the A24VG to be used in various customer applications. The Rexroth axial piston variable double pump A24VG is optionally available with a through drive for mounting of further pumps. These pumps are stabilized through the solid flange of the Rexroth A24VG. In a lot of cases, an additional stabilization is not required. The comprehensive product portfolio is complemented by different sensors.

### Assembly-friendly positioning of the working ports

The working ports are centrally bundled and situated on one side of the housing. This easy to assemble arrangement offers advantages especially during mounting in a mobile working machine and in case of maintenance. To supply the Rexroth A24VG with hydraulic fluid there is only one central housing port necessary. This reduces the effort for installation and maintenance.

Bosch Rexroth AG  
GlockeraustraÙe 2  
89275 Elchingen, Germany  
Phone +49 7308 82-0  
Info.ma@boschrexroth.de  
www.boschrexroth.com

© Bosch Rexroth AG 2021. All rights reserved, also regarding any disposal, exploitation, reproduction, editing, distribution, as well as in the event of applications for industrial property rights.

The data specified within only serves to describe the product. No statements concerning a certain condition or suitability for a certain application can be derived from our information. The information given does not release the user from the obligation of own judgment and verification. It must be remembered that our products are subject to a natural process of wear and aging.