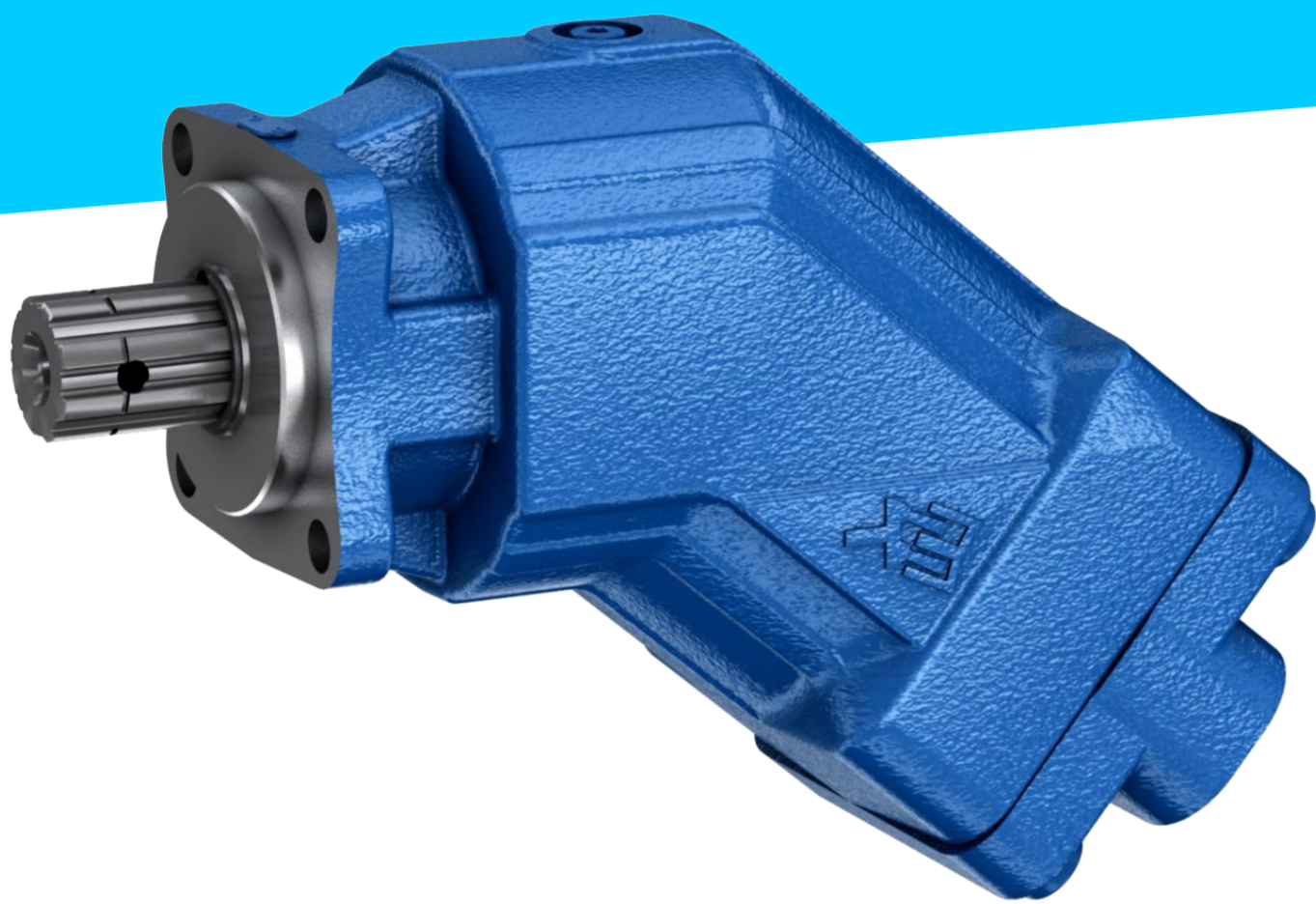


Axial piston fixed pump

A17F(N)O series 10

High nominal pressure and compact design



Increasing performance demands on the working hydraulics of truck superstructures and stricter regulations on noise and pollution require efficient and powerful hydraulic pumps. For truck body manufacturers and end users, high reliability is also a key factor. In addition, easy integration into the limited installation space and simple adaptation to the rotation direction of the drive motor is important. For truck applications Bosch Rexroth has especially developed the axial piston fixed displacement pumps A17FO and A17FNO.

CUSTOMER BENEFITS

- Compact design and high power density
- Easy change of drive rotary direction
- Low operating noise and high efficiency
- Good self-priming capacity and high speed limit
- Direct piston drive and high running smoothness
- Robust rotary group and long service life
- Easy replacement of truck hydraulic pumps from other manufacturers through the Rexroth A17F(N)O

FUNCTION AND BENEFITS

Compact design and high power density

The proven fixed pump A17F(N)O series 10 in bent-axis design differs from conventional truck hydraulic pumps by its high power density. This results from its compact design, low weight and the robust 7-piston high-pressure rotary group on the A2F series.

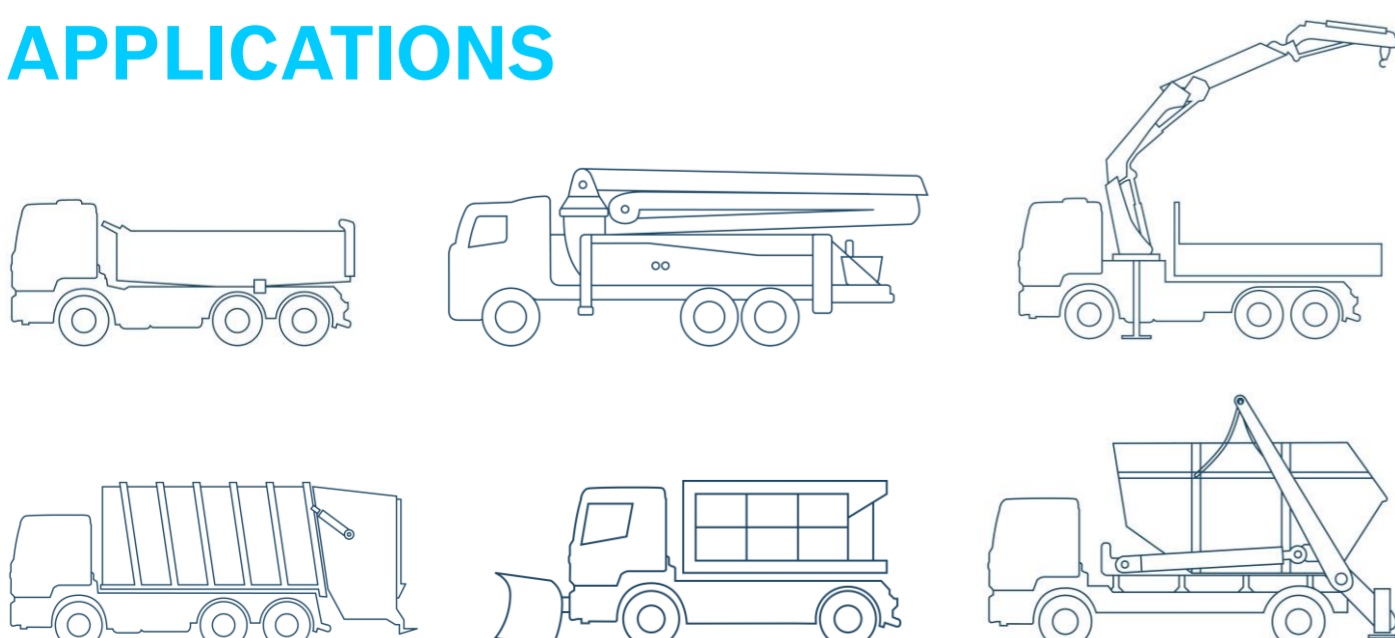
Easy change of drive rotary direction

By changing the screw-in position of the pressure connector, the rotation direction of the Rexroth A17F(N)O can be changed easily without disassembling the pump or the port plate. A further advantage is that only one variant of each size is needed, independent from the later rotation direction of the pump or the power take-off.

Low operating noise and high efficiency

According to the rotation direction of the hydraulic pump, the pressure connector also determines the twisting of the control plate and the position of the noise notches. As a result, the Rexroth A17F(N)O is quieter, has a lower pulsation and a higher efficiency compared to other truck hydraulic pumps.

APPLICATIONS



Axial piston fixed pump A17F(N)O series 10
High nominal pressure and compact design

TECHNICAL DATA

Axial piston fixed pump A17FO / A17FNO series 10

Sizes:	23 ccm to 107 ccm and 125 ccm
Maximum pressure:	400 bar / 300 bar
Nominal pressure:	350 bar / 250 bar
Rated speed:	2000 rpm to 3050 rpm / 1750 rpm
Weight:	approx. 5.9 kg to 15 kg / 15 kg
Mounting flange:	Truck flange according ISO 7653
Drive shaft:	Similar to DIN ISO 14
Working connections:	Inch threads according DIN ISO 228
Installation length (incl. pressure connector):	185 mm to 272 mm
Data sheets:	91520 / 91510



The Rexroth A17F(N)O Series 10 fits for various truck applications.

EXPLORE MORE



A17FO



A17FNO

Good self-priming capacity and high speed limit

With regard to comparable hydraulic pumps, the Rexroth A17F(N)O is characterized by a good self-priming capability and higher maximum speed. This results from various design measures, such as the spherical shape of the control plate and cylinder, improved compensation of transverse forces and the avoidance of an additional guide pin between control plate and cylinder. This leads to larger cross-sections of the inlet openings in the cylinder and a more streamlined shape of the control slots.

Direct piston drive and high running smoothness

In the case of the Rexroth A17F(N)O, the cylinder is driven by the pistons and not, as usually, by a separate cardan or a gear rim. Through the direct conversion of the drive torque into hydraulic work, mechanical friction losses are minimized. The noise emission of the axial piston fixed pump A17F(N)O is reduced and at the same time running smoothness is improved.

Robust rotary group and long service life

The use of a rotary group with tapered pistons makes the Rexroth A17F(N)O less sensitive against soiling. Contaminations in the hydraulic oil and smaller particles can be flushed out through the annular gap between cylinder and piston without major damages. The robust rotary group has a long service life, which keeps the follow-up costs for the end user low. Due to its robustness, the Rexroth axial piston fixed pump A17F(N)O fits very well for a wide range of truck applications.

Bosch Rexroth AG
Glockeraustraße 2
89275 Elchingen, Germany
Phone +49 7308 82-0
Info.ma@boschrexroth.de
www.boschrexroth.com

© Bosch Rexroth AG 2021. All rights reserved, also regarding any disposal, exploitation, reproduction, editing, distribution, as well as in the event of applications for industrial property rights.

The data specified within only serves to describe the product. No statements concerning a certain condition or suitability for a certain application can be derived from our information. The information given does not release the user from the obligation of own judgment and verification. It must be remembered that our products are subject to a natural process of wear and aging.